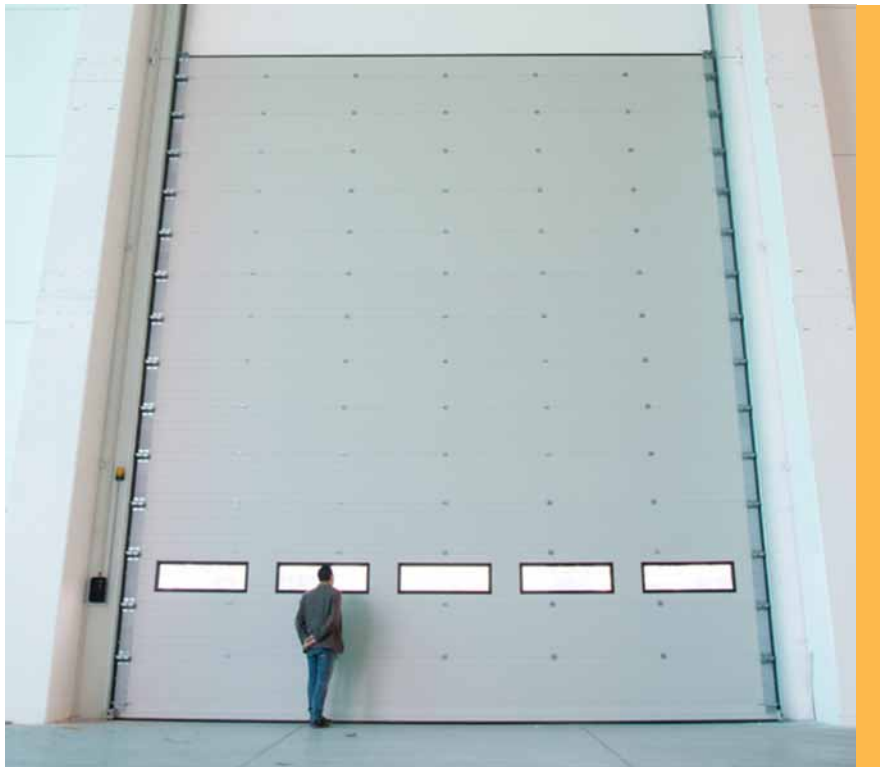


# INDUSTRIAL UP AND OVER GARAGE DOOR

It consists of specially designed panels made of galvanized steel sheet. Polyurethane insulation in the interior.



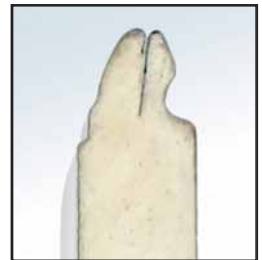
The special design of the panels and the rubber seal they contain ensure the prevention of injuries during operation.



Spiral springs with inner rod.

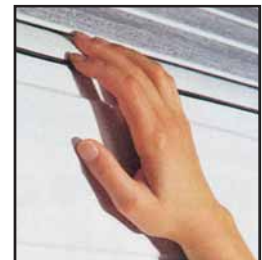


Double faced 42 mm panel  
Twin wall, highly durable.  
Made of 1mm profiled galvanized steel and 40 mm insulation with ecological polyurethane. It offers excellent thermal and sound insulation.



### Special finishing for finger protection, interior - exterior

The area where the panels are jointed together is specially formed so as to prevent potential trapping of the fingers while opening or closing the garage door.



### Special side covers

Once cut, the lateral parts of the garage door panels are covered with specially formed galvanized sheet caps with the same finishing and color as the door's interior surface.



### Rubber seals at the guides

The garage door is fitted with rubber seals along the lateral guides. Thus, it offers effective protection against dust while at the same time ensuring the noise-free operation of the garage door.



### Special top and bottom rubber seals

Special, single and triple adhesion rubber strips made of elastomer PVC are provided at the top and bottom of the garage door respectively, In order to protect the garage space against the wind, dust and water.

