

PROFILES FOR INDUSTRIAL DOORS

***New  
innovative  
arrival !***



**F 140**



**F 100**

 **GEROLIMATOS**

ROLLING SHUTTERS • INDUSTRIAL DOORS

# F 100

Roller shutter made of:

- a) pre-painted aluminum panel, 0,5mm thick and 100mm wide or  
b) steel, 0,5mm thick and 100mm wide.

The interior consists of ecological polyurethane, thickness 17mm,  
density 160kg/m<sup>2</sup>, thermal resistance rate 4,8 W/(m<sup>2</sup>·K).

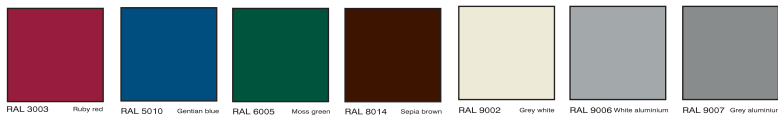
It combines high strength and security standards, low noise during operation,  
thermal insulation, sound insulation and perfect finishing.

Type F 100 is delivered electrostatically painted  
in the shades of the main color index, even in wood imitation.

## TECHNICAL SPECIFICATIONS

MATERIALS	ALUMINIUM	STEEL
FINISH	PREPAINTED	GALVANIZED PAINTED
PROFILE HIGHT	98 mm	98 mm
PROFILE STEP	90 mm	90 mm
W EIGHT	0,55 kg/m • 6,10 kg/m <sup>2</sup>	1,2 kg/m • 13,22 kg/m <sup>2</sup>
MAX.DIMENSION	4000 mm X 4000 mm	5000 mm x 5000 mm
WIND RESISTANCE	CLASS 2 According to the UNI EN 12424	CLASS 2 According to the UNI EN 12424
THERMAL RESISTANCE	5,50 W/(m <sup>2</sup> ·K)	4,80 W/(m <sup>2</sup> ·K)

### PREPAINTED COLOR



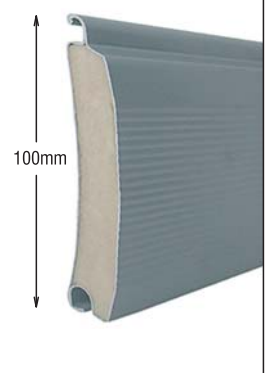
### PAINTED COLOR



### WOOD IMITATION



**PROFILE A:**  
ALUMINIUM  
**DIMENSION:**  
100mm  
**THICKNESS:**  
0,5mm



**PROFILE B:**  
STEEL  
**DIMENSION:**  
100mm  
**THICKNESS:**  
0,5mm

The last  
profile (endplate)  
consists  
of a specially  
reinforced  
aluminum profile  
fitted with  
a special PVC strip  
for enhanced  
sealing.



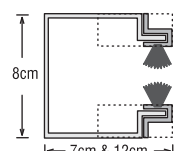
Special  
polyamide cap  
at profile ends  
that reduces  
friction and noise.



Ability  
to incorporate  
special glazing  
made of  
transparent plastic  
material for lighting  
and visual  
communication  
with the interior.



Guide made of  
1,5 - 2mm thick,  
"Q" shaped  
galvanized steel  
that works together  
with a special  
aluminum profile  
and brush strip  
to reduce friction  
and noise.







# F 140

Roller shutter made of:

a) **pre-painted aluminum panel**, 0,6mm thick and 140mm wide or

b) **galvanized steel**, 0,5mm thick and 140mm wide.

The interior consists of ecological polyurethane, density 160 kg/m<sup>2</sup> and thermal resistance rate 3,7 W/(m<sup>2</sup>·K).

It combines high strength and security standards, low noise during operation, thermal insulation, sound insulation and perfect finishing.

Type F 140 is delivered electrostatically painted in the shades of the main color index.

Ideal for oversized openings in industrial spaces and warehouses.

Certified for wind pressure strength for dimensions 12m x 12m

(Class 2 according to UNI EN 12424).

## TECHNICAL SPECIFICATIONS

MATERIALS	ALUMINIUM	STEEL
FINISH	PREPAINTED	GALVANIZED PAINTED
PROFILE HIGHT	144 mm	144 mm
PROFILE STEP	123 mm	123 mm
W EIGHT	1,07 kg/m • 8,60 kg/m <sup>2</sup>	2,04 kg/m • 16,33 kg/m <sup>2</sup>
MAX.DIMENSION	12000 mm X 12000 mm	12000 mm X 12000 mm
WIND RESISTANCE	5 X 5 - CLASS 4 7,5 X 7,5 - CLASS 3 12 X 12 - CLASS 2* According to the UNI EN 12424 *With Wind Hooks	5 X 5 - CLASS 4 7,5 X 7,5 - CLASS 3 12 X 12 - CLASS 2* According to the UNI EN 12424 *With Wind Hooks
THERMAL RESISTANCE	5,00 W/(m <sup>2</sup> ·K)	3,70 W/(m <sup>2</sup> ·K)

### PREPAINTED COLOR

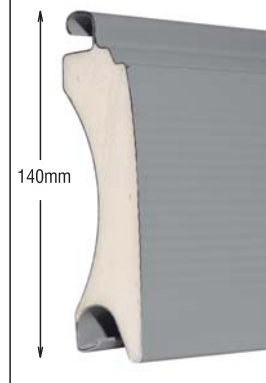
RAL 3003 Ruby red	RAL 5010 Gentian blue	RAL 6005 Moss green	RAL 8014 Sepia brown	RAL 9002 Grey white	RAL 9006 White aluminum	RAL 9007 Grey aluminum

### PAINTED COLOR

RAL 1013 Oyster white	RAL 1015 Light ivory	RAL 3002 Carmine red	RAL 5007 Brilliant blue	RAL 5010 Gentian blue	RAL 6005 Moss green	RAL 6009 Fir green
RAL 6011 Reseda green	RAL 7005 Mouse grey	RAL 7011 Iron grey	RAL 7012 Basalt grey	RAL 7015 Slate grey	RAL 7030 Stone grey	RAL 7035 Light grey
RAL 7037 Dusty grey	RAL 7038 Agate grey	RAL 7039 Quartz grey	RAL 7040 Window grey	RAL 7042 Traffic grey A	RAL 7044 Silk grey	RAL 8007 Faen brown
RAL 8011 Nut brown	RAL 8014 Sepia brown	RAL 9002 Grey white	RAL 9005 Jet black	RAL 9006 White aluminum	RAL 9007 Grey aluminum	RAL 9016 White

\*A. GEROLIMATOS S.A. RESERVES THE RIGHT TO CHANGE THE MAIN COLOR INDEX.  
\*SHADE ILLUSTRATION IS INDICATIVE.

**PROFILE A:**  
ALUMINIUM  
**DIMENSION:**  
140mm  
**THICKNESS:**  
0,6mm



**PROFILE B:**  
STEEL  
**DIMENSION:**  
140mm  
**THICKNESS:**  
0,5mm

The last profile (endplate) consists of a specially reinforced aluminum profile fitted with a special PVC strip for enhanced sealing.



Special polyamide cap at profile ends that reduces friction and noise.



Specially designed hinge for noise-free operation and higher resistance to wind pressure.



Guides made of 1,5 - 2mm thick, "Ω" shaped galvanized steel with an aluminum profile brush strip. Also fitted with split PVC scroll that facilitates smooth and noise-free movement of the roller shutter and protection against friction.





## The 6 main reasons that make our company stand out !

### 1. We have insulated profiles for every application

**1.1.** F100 made of pre-painted aluminum. Maximum size 4x4 m.  
Immediate delivery for standard colours.

**1.2.** F100 made of galvanized, pre-painted or powder coated steel. Maximum size 5x5 m.  
Immediate delivery for standard colours.

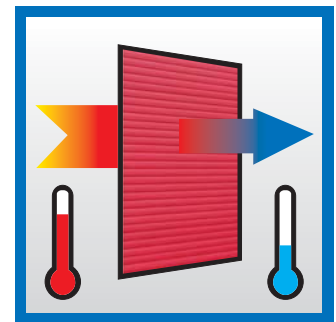
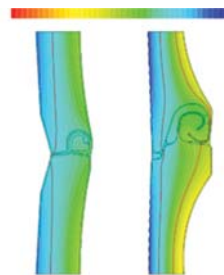
**1.3.** F140 made of pre-painted aluminum. Maximum size 12x12 m.  
Immediate delivery for standard colours.

**1.4.** F140 made of galvanized, pre-painted or powder coated steel. Maximum size of 12x12 m.  
Immediate delivery for standard colours.



### 2. The profiles are certified for high thermal efficiency

The F100 and F140 profiles significantly contributing to energy saving in buildings.



### 3. The F100 and F140 profiles are certified for high wind resistance

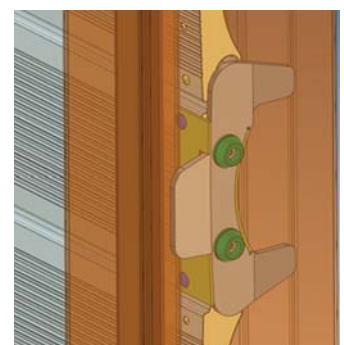
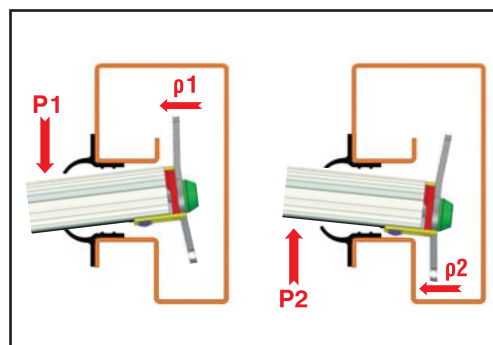
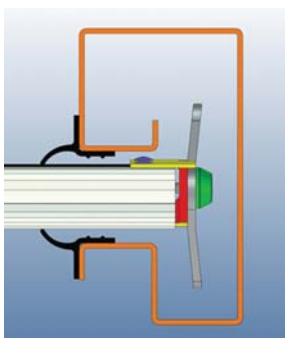
**3.1.** The 12x12 m F140 profile can reach class 2 level of UNI EN 12424 standard.

**3.2.** Medium sizes can reach class 4 level of UNI EN 12424 standard.

**3.3.** We have designed, tested and certified a new wind resistant hook ensuring windproof protection in all conditions.



WIND PRESSURE  
CERTIFICATE



## The 6 main reasons that make our company stand out !

### 4. We offer a solution for every motor type:

#### 4.1. ELSAMEC for:

Standard applications with normal lift speeds.

#### 4.2. GFA Elektromaten, for:

- High lift speed: 500 mm/sec for motors with inverter.
- ATEX conditions.
- Electronic control panel with digital limit switch.



### 5. Our priorities are safety and reliability

5.1. All our products are **CE** certified according to UNI EN 13241-1 standard.

5.2. The relevant tests are performed in university laboratories.

5.3. Our roller shutters are characterized by:

- Long life
- Quality
- Low maintenance costs



F100 & F140  
HEAT TRANSFER  
CERTIFICATES



A. GEROLIMATOS SA  
is certified according to  
EN ISO 9001:2008



WIND PRESSURE  
CERTIFICATE

### 6. All our products are environmentally friendly

6.1. All parts of roller shutters are fully recyclable.

6.2. Polyurethane used does not contain hydrofluorocarbons (HFC).







A. GEROLIMATOS SA was founded in 1971. It specializes in the production and trading of metal security roller shutters and garage doors for residential, professional and industrial use. At the same time, it trades barriers, motors (opening and sliding doors), accordion shutters, loading and unloading platforms, fire shutters and fire curtains. The manufacturing plant facilities are situated in Avlonas and they are housed in three modern buildings with a total floor area of 6.500 m<sup>2</sup> (roofed spaces) and yearly production capacity of 45.000 m<sup>2</sup>.

The plant has:

- Six separate production lines, depending on the profile.
- Complete sheet cutting and forming equipment.
- Automatic electrostatic painting shop.
- Machine shop for specialized large structures.



#### A. GEROLIMATOS SA

**PLANT:** 48th km N.R ATHENS - LAMIA, 190 11 AVLONAS ATTICA

TEL.: (+30)22950 42748-50, FAX: (+30)22950 42750

**SHOWROOM 1:** 22 THESSALONIKIS str. (9th km N.R ATHENS - LAMIA )

TEL.: (+30)210 2515 057, 210 2581 770

**SHOWROOM 2:** 397 L. ATHINON str., EGALEO

TEL.: (+30)210 5314 590, FAX: (+30)210 5314 591

**e-mail:** [info@gerolimos.gr](mailto:info@gerolimos.gr) , [www.gerolimos.gr](http://www.gerolimos.gr)